

Treble and Bass Clef Practice

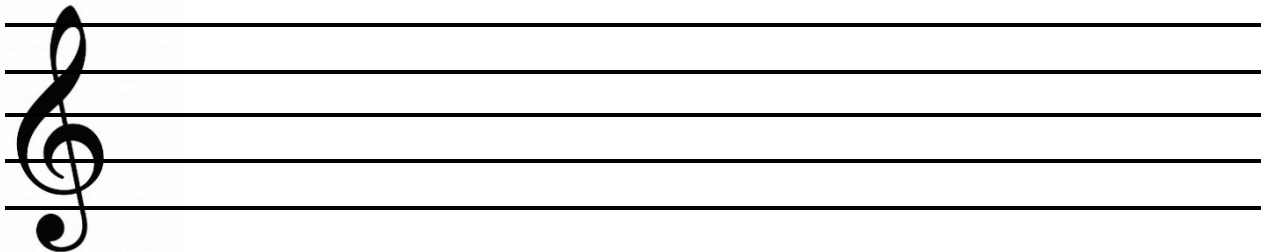
Draw ten notes on the *treble clef G* line of the staff below:



Draw ten notes on the *bass clef F* line of the staff below:



Draw five treble clef signs below. Be sure to have the curl wrap around the second-line G.



Draw five bass clef signs below. Be sure to place the two dots above and below the second-line F.

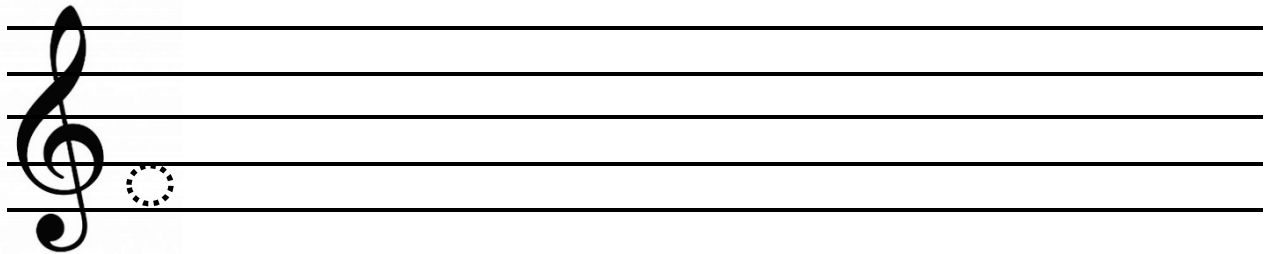


Treble and Bass Clef Practice (cont.)

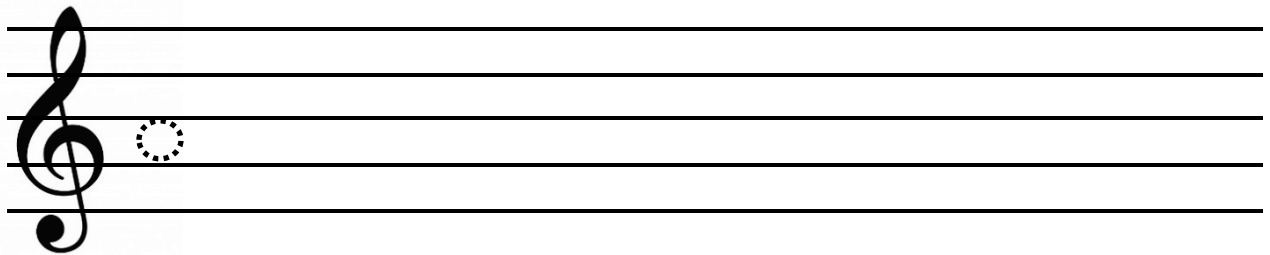
The space right *below* G on the treble clef is _____. (Remember, it's the letter that comes right before G in the music alphabet!)

The space right *above* G on the treble clef is _____. (Remember, it's the letter that comes right after G in the music alphabet!)

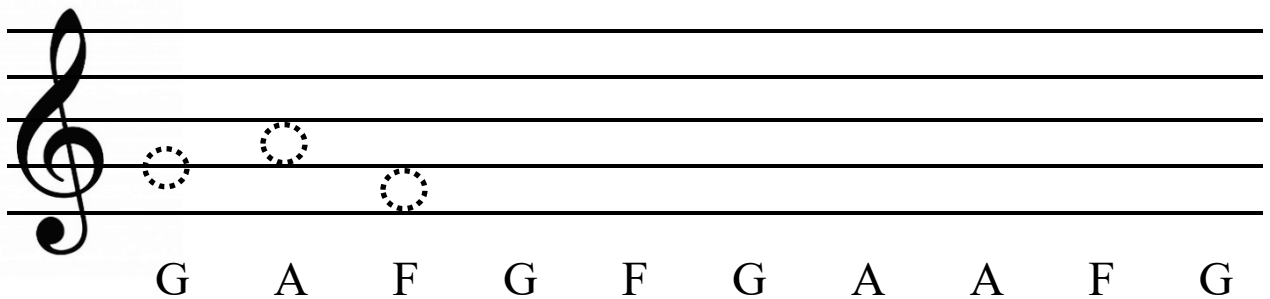
Draw ten notes on the F space that is just below the G line of the treble clef staff below:



Draw ten notes on the A space that is just above the G line of the treble clef staff below:



Draw the notes indicated below on the correct lines or spaces:

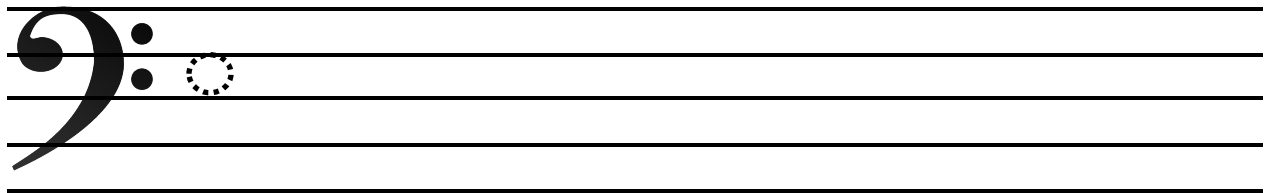


Treble and Bass Clef Practice (cont.)

The space right *below* F on the bass clef is _____. (Remember, it's the letter that comes right before F in the music alphabet!)

The space right *above* F on the bass clef is _____. (Remember, it's the letter that comes right after F in the music alphabet!)

Draw ten notes on the E space that is just below the F line of the bass clef staff below:



Draw ten notes on the G space that is just above the F line of the bass clef staff below:



Draw the notes indicated below on the correct lines or spaces:



F G E F E F G G E F

Treble and Bass Clef Practice (cont.)

Draw the notes indicated below on the correct lines or spaces:

G A F F G A G G F A

Draw the notes indicated below on the correct lines or spaces:

F G E E F G F F E G

Draw the notes indicated below on the correct lines or spaces:

G F A G G A G F G A

Draw the notes indicated below on the correct lines or spaces:

F E G F F G F E F G