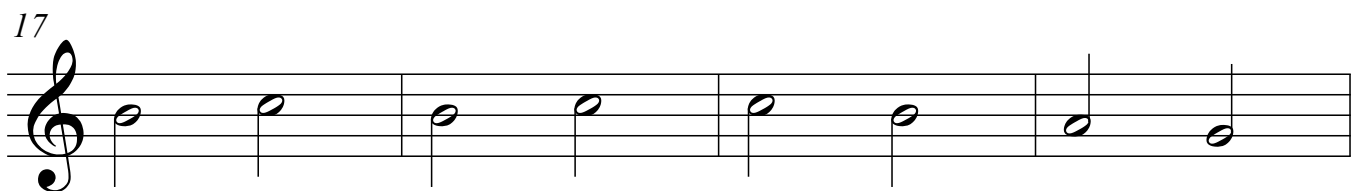
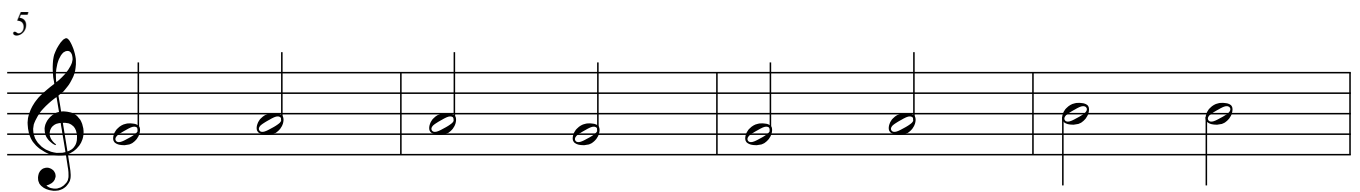
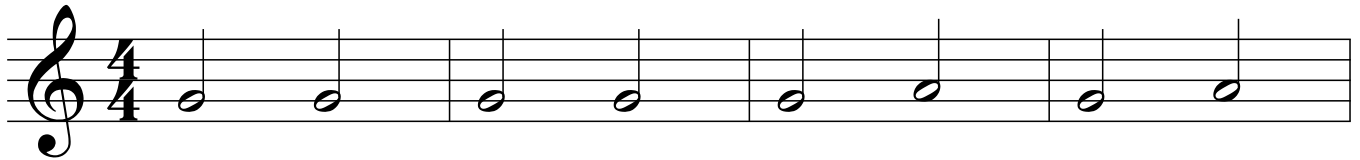


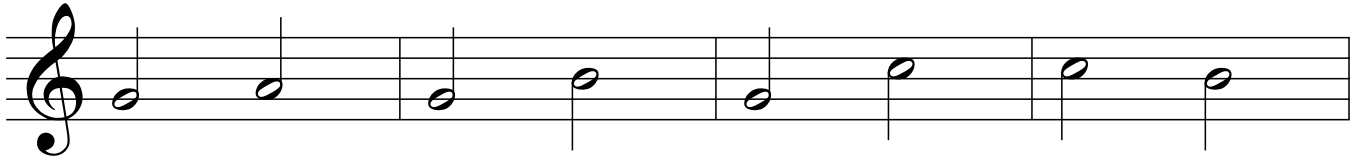
Treble Clef, Notes G-A-B-C-D-E-F-G

Write the letter name below each note.

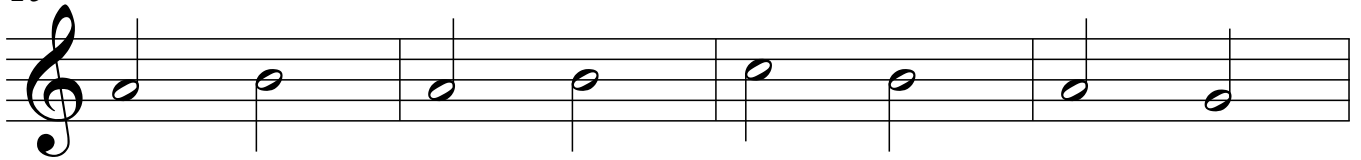


Treble Clef, Notes G-A-B-C-D-E-F-G

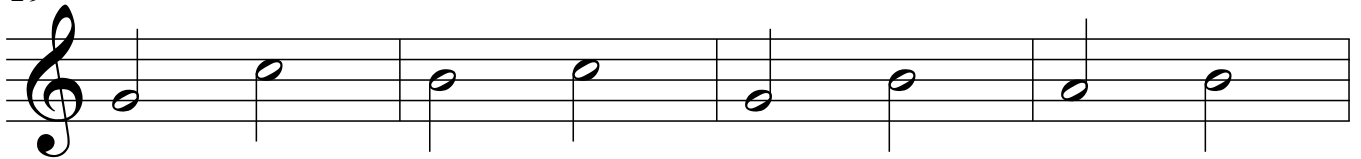
21



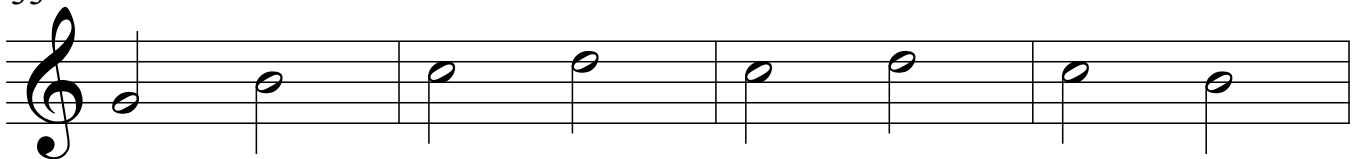
25



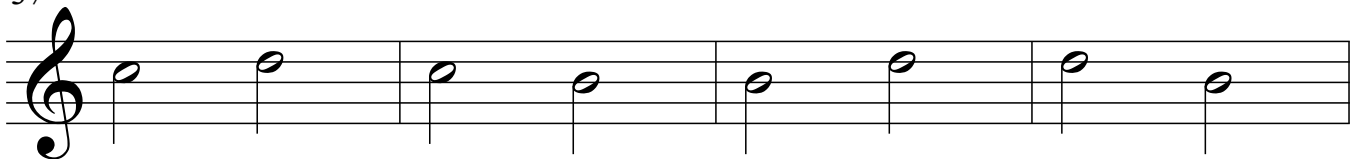
29



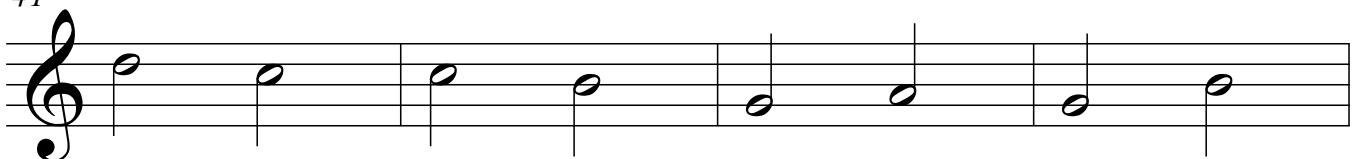
33



37

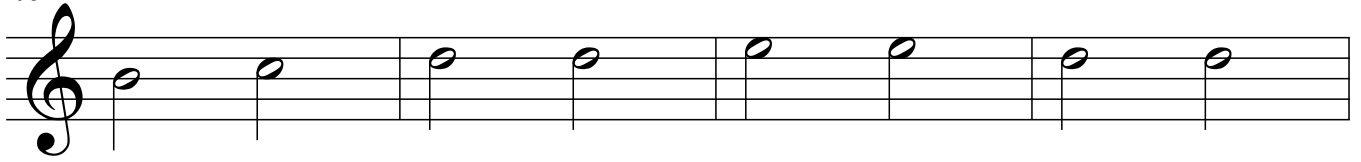


41

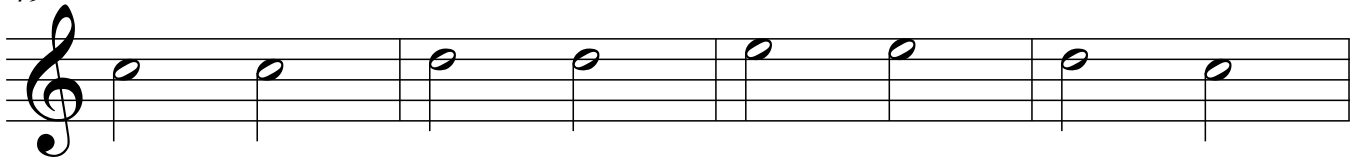


Treble Clef, Notes G-A-B-C-D-E-F-G

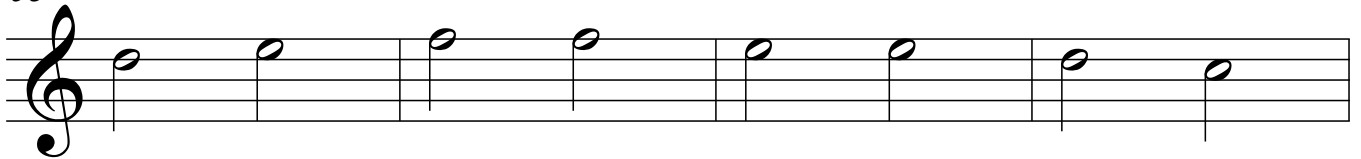
45



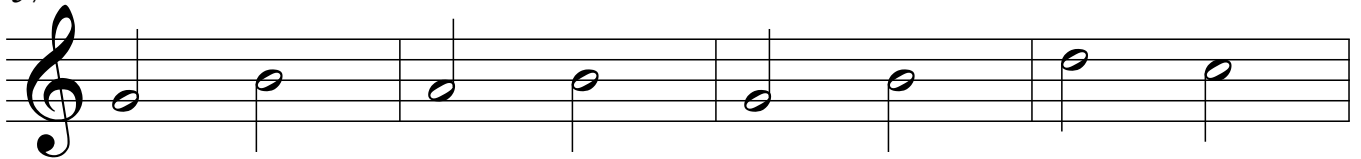
49



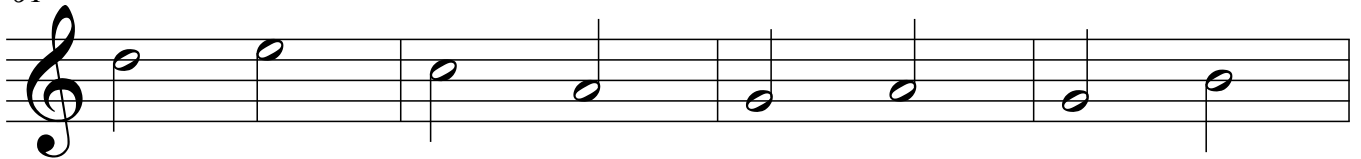
53



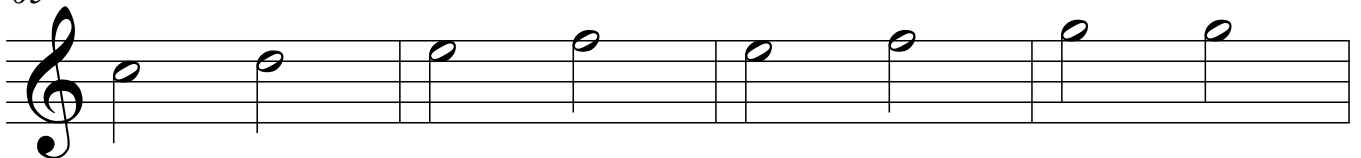
57



61

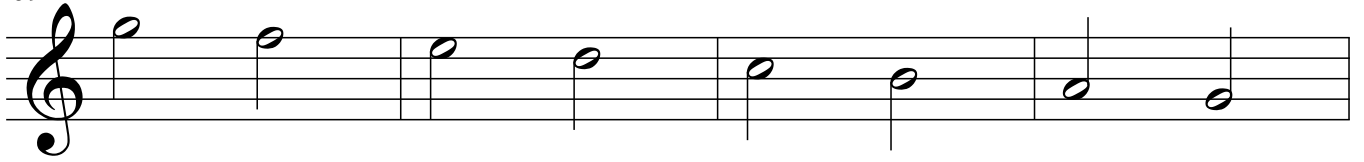


65

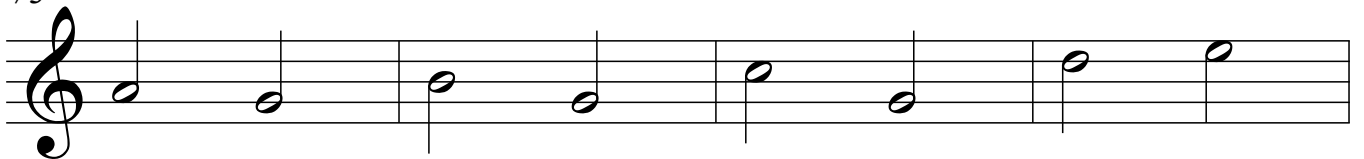


Treble Clef, Notes G-A-B-C-D-E-F-G

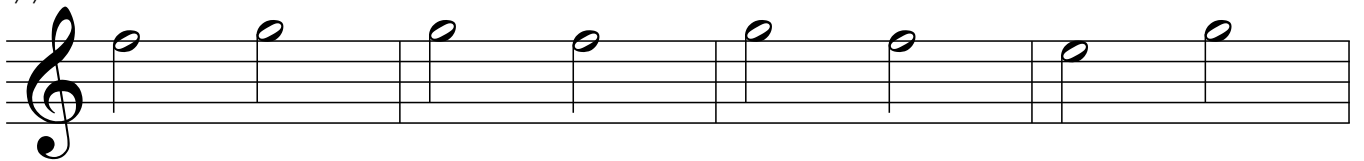
69



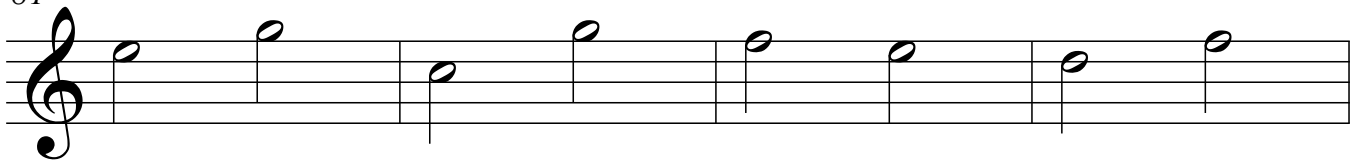
73



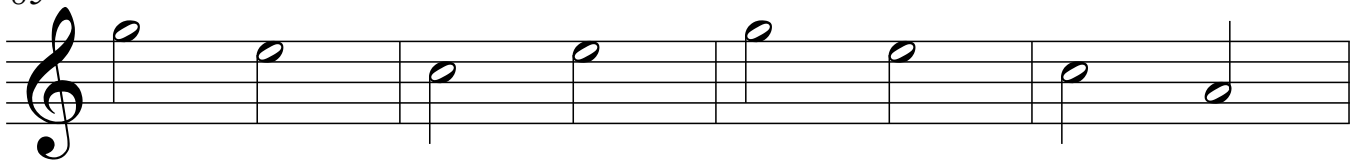
77



81



85



89

